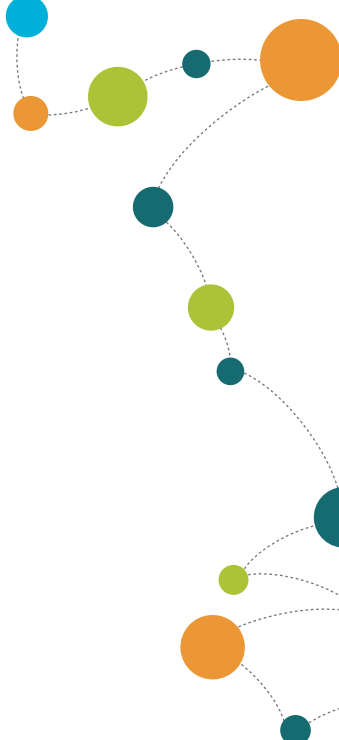


Simply Advancing Healthcare



CAREfx[®]
Simply Advancing Healthcare

The inability to have the right data at the right time in the right place destroys the vital link between physicians and the information they need to make life-changing decisions. Large quantities of patient data are isolated and ineffective—locked in applications that don't speak to one another, mired behind multiple logins, and presented in ways that aren't efficient, intuitive or effective.

In this disjointed world, everyone suffers—from the exam room to the OR to the CEO's office—as access limitations keep physicians from being on point at the point of decision, as technological shortfalls make recruiting and retaining the best and brightest more difficult, and as facilities lose collaborative power as information falls through the cracks. Lack of interoperability translates to lost ROI, as current IT investments can't be used to their best advantage, and the breakdown culminates in lost opportunities to advance the quality and safety of patient care. Fusionfx closes the gaps in information for everyone along the healthcare spectrum, with service-oriented solutions that radically streamline workflow and improve both outcomes and organizational performance.

The CEO needs an answer and needs it now.

Market share is waning, competition threatening and clinician frustration with unintuitive legacy systems growing. Information gaps mean a loss of productivity or worse, potential for serious errors in patient care. Change is necessary—but too much of a shakeup isn't the answer. Carefx provides a time-to-solution that's measured in weeks, not years, and a suite of smart answers to help meet the interoperability required for meaningful use to secure HITECH incentives and move to such new delivery models as Accountable Care and the Patient Centered Medical Home.

The CFO wants to know that the money's well spent.

Investments in single-vendor solutions haven't solved every problem and neither has best-of breed. But a solution that "bridges the gaps" can't be code for "rip and replace." Streamlining revenue-related processes, effectively managing reimbursement risk and keeping liability low—at the same time—would be the best of all worlds. Starting over would be a catastrophe. Carefx leverages existing technology investments, making the most of legacy systems, improving ineffective workflows and bottom lines, and boosting competitiveness.

The CIO must find a solution that's as painless as possible.

Seamless interoperability, longevity and functionality that won't send users to the help desk are sorely needed. But change has to happen quickly—while sustaining the vital

balance of care and commerce. Carefx solutions utilize existing infrastructure and install quickly, non-disruptively, without placing extra burden on care providers or compromising compliance, privacy or security.

The CMIO needs to create connections.

Concern for attracting new physicians with new technologies conflicts with keeping current ones happy and productive. Quality of patient care comes alongside worries about HIT adoption. And empowering patients to understand their medical conditions and take control of their health is a major goal. Carefx closes the gaps, between technology, physicians and patients, and between all the disparate sets of information everyone needs to do their jobs well.

The Compliance Officer must protect patient privacy.

As information moves from one department, facility or information exchange to another, security is a huge concern. Carefx never moves or endangers data, simply aggregating patient-centric information. Because it's accessed from a single point of entry at the end-user level, control over who has seen what is imminently available. Further, data physically stays put and source databases never change, helping institutions avoid ownership snares over private information being collected and combined.

The Physician just wants to get back to work.

No one gets into medicine to chase data and file paperwork. The process should be faster, the interface more intuitive and the whole exercise more beneficial to everyone involved. Carefx removes laborious navigation through disconnected data, simplifying information access to a one-login, single patient selection proposition with a unified view, encouraging meaningful use.

The Patient needs to be in the know.

Intimidated by complex diagnoses and a perceived lack of control, knowledge makes an effective cure-all. Carefx connects the dots in patient care, bridging data silos to ensure physicians have the information they need when they need it, and patients gain an understanding of and participation in their personal health.

With a variety of benefits across the healthcare spectrum, Fusionfx is a solution suite that covers all the bases—aggregating patient information across existing systems and delivering it in a single, clear, clinically relevant view to physicians at the point of care or point of decision.

It's quick to implement.

With Fusionfx, facilities can be up and running in as little as 90 days. And because Fusionfx works with (but doesn't replace) your current applications and infrastructure, it won't burden care providers or disrupt process or quality of care.

It's safe and secure.

Because Fusionfx doesn't copy or move your data, the security and integrity of your essential patient information never changes. Whether sharing data within your institution or externally with other care providers or business partners, Fusionfx is built using industry standards that assure every bit of your vital information will be presented securely and audited appropriately. The result: easy end-to-end governance and certain peace of mind.

It's cost-effective.

Fusionfx protects your IT investments by embracing what works about your current information systems and optimizing what doesn't, connecting your disparate applications to allow real-time interaction across existing systems and platforms. Rather than creating a new data repository or replacing your systems with an entirely new solution, Fusionfx simply works with what you've got, pulling the pieces together to form a clear clinical picture.

It's intuitive.

With Single Sign-On and single patient selection, physicians can access just the right information—admitting last month to radiology last week to this exam room this very moment—virtually connecting disparate data and applications, all without redundant searches, frustration and wasted time that could be spent with the patient. Fusionfx expedites the care process by creating streamlined workflows that support an individual's cognitive process.

It's tailor-made.

Just as every patient requires personalized care, every physician needs personalized workflow to make it happen. Fusionfx makes delivery of your clinical data context-sensitive, clinically relevant and imminently available at the point of decision. Above all, it's personalized—presenting only the data they need, in the way they need to see it. It's a simple thing with big results that erases the need to dig for information, streamlines workflow and, most importantly, improves patient outcomes.

It's flexible.

Instead of a hard-wired system that can never change or grow, Fusionfx is malleable and interoperable. Through its Service Oriented Architecture (SOA), Fusionfx minimizes long-term IT costs by offering a solution that can change as quickly as the healthcare environment does. This is change without great change—more evolutionary than revolutionary.

It's scalable.

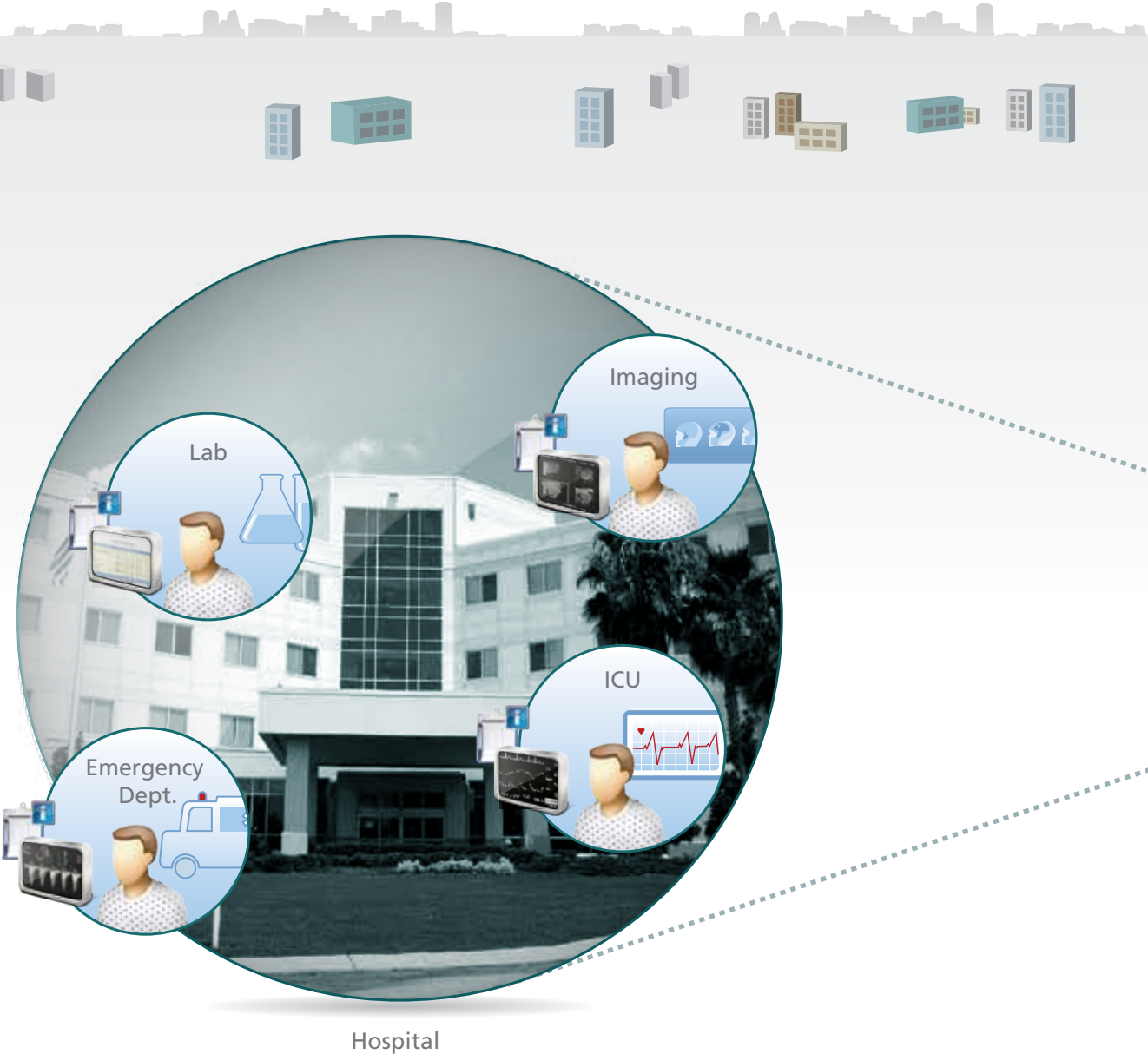
As big or as small as your needs dictate, Fusionfx can serve on any scale, from single departments to the entire hospital, to multi-facility organizations and HIEs, incorporating different systems, data and usage policies to advance how healthcare is delivered across the continuum.

It's where you are.

At the desktop, remotely with VDI and through portals and mobile devices, Fusionfx presents information in a standard but secure web browser. Fusionfx offers doctors the freedom to get the information they need, when they need it—at home, on the road, at the nurse's station, or even via mobile device—instead of only inside hospital walls. The result is more timely assessment that's less intrusive to physician's lives and mo

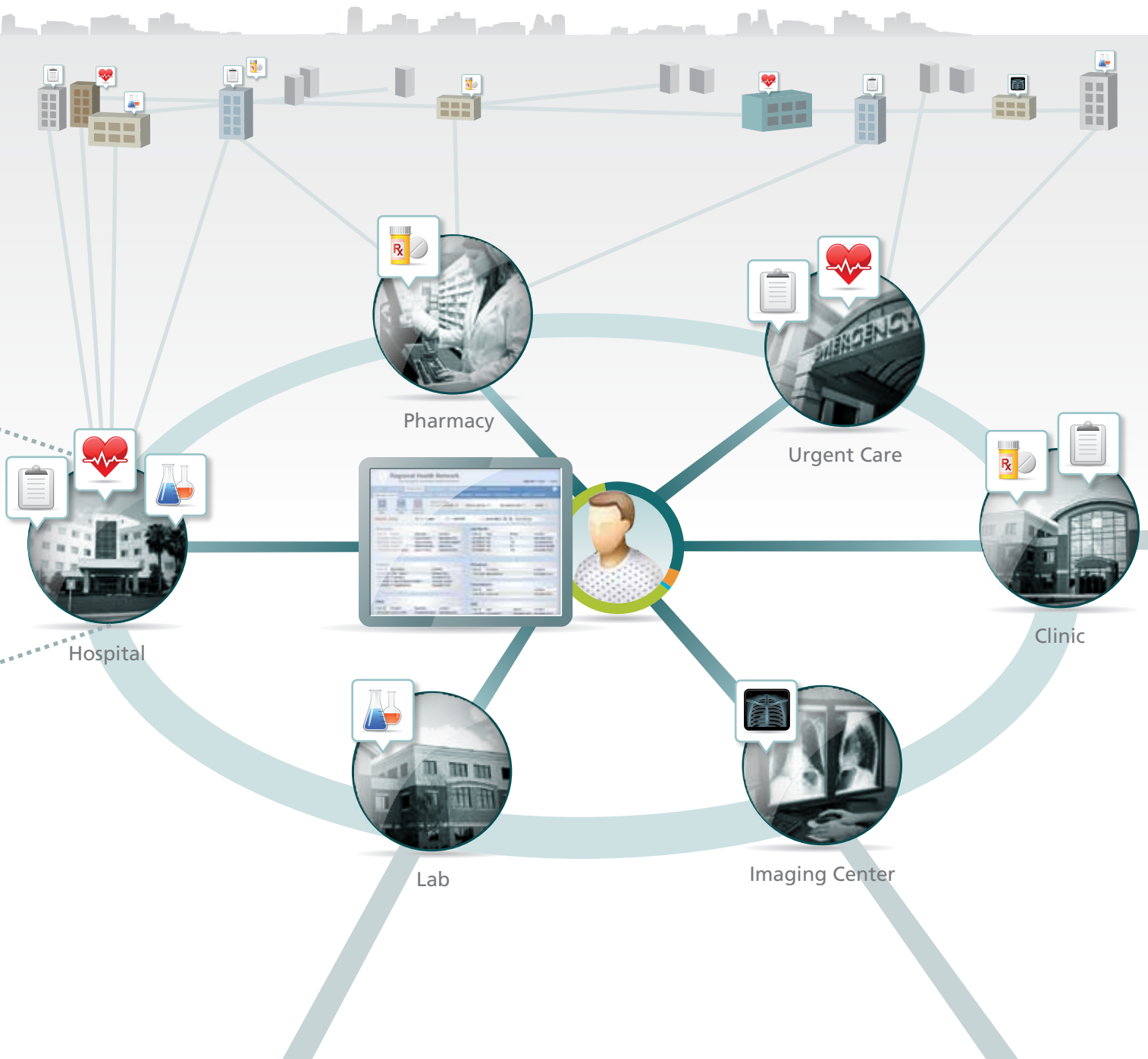
From systems to departments to hospitals to delivery networks to health information exchanges, Fusionfx connects your organization.

Fusionfx transforms isolated applications into connected information delivery systems, transforms disparate data into actionable information, and then makes that information available to clinicians on-demand, in the way they need it and in the way it is best understood.



Fusionfx is an interoperable, intuitive solution suite that incorporates the latest standards-based technologies and industry best practices to give you all the pieces you'll ever need to streamline retrieval, access and usage of your patient information. Through Service Oriented Architecture, an intelligent workflow automation engine, and our unique,

varied options for secure data sharing, Fusionfx not only connects your system's essential data, but connects your institution's human assets as well—administrator to physician to patient, department to department, and your facility to other networks and information exchanges.



Smart interoperability meets seamless implementation

By drawing select functionality from several different sources and combining multiple, existing functions into new applications, Fusionfx applications leverage enterprise and enterprise-ready sources of information to support informed clinical decision-making and streamlined care delivery.





Performance Management & Improvement Solutions

Fusionfx Length of Stay Dashboard provides meaningful information around length of stay, opportunity days, physician performance and best practice comparisons.

Fusionfx Cost per Case Dashboard helps reduce cost by benchmarking and performing peer comparisons to identify individual physicians or departments with higher costs.

Fusionfx Documentation & Coding Dashboard accurately values complexity of care and project expected mortality, ensuring proper reimbursement and improving physician ranking.

Fusionfx Quality Dashboard drives quality improvement with insight into core measures, mortality and patient experience.

Fusionfx BI Consulting Services support deployment of Carefx Business Intelligence technology, implementing or enhancing performance improvement programs to help organizations achieve and sustain high-level performance.



Clinical Workflow Management Solutions

Fusionfx Community Information Exchange enables IDNs, physician practices, medical groups and other community care providers to exchange data and information as never before. It empowers providers to send and receive clinical documents, exchange information on orders and engage in clinical messaging.

Fusionfx Referral Management manages the life cycle of a patient referral, giving clinicians a single, composite view of relevant information, regardless of the information's source. Clinicians and referral coordinators find specialists, book appointments online, transmit clinical data, view completed consult notes and track referrals from beginning to end, all within a unified portal.

Fusionfx Medication & Allergy Reconciliation provides real-time views and updates of patient medication lists, builds pre-admission patient medication lists and reconciles medications/allergies at admission, discharge and transfer. It aggregates medication/allergy history from all available sources including EMR systems, healthcare information exchanges (HIEs), retail pharmacies and outpatient dispensing records, providing the most accurate possible medication profile to help physicians make correct clinical decisions.

Fusionfx Clinical Desktop gives clinicians intuitive access to all authorized applications, streamlining patient selection and workflow.

Fusionfx Clinical Inbox provides universal communication capabilities for providers to connect to each other, hospitals and patients despite differing locations and EMRs.

Fusionfx Disease Management allows patients to access their clinical records, establish key goals, maintain diaries and interact with the care team online, keeping them informed and the care team prepared and proactive.



Clinical Information Access & Integration Solutions

Fusionfx Provider Portal gives physicians a unified view of critical patient data across the enterprise, the continuum and the episode of care—despite disparate systems and varying locations.

Fusionfx Patient Portal ensures online, anytime, anywhere access to healthcare information and services for healthcare consumers.

Fusionfx Clinical Image Viewer allows clinicians to access patient image studies when they need them most—while reviewing the corresponding radiology report.

Fusionfx Community Health Record provides a longitudinal view of the patient record with clinical data from disparate inpatient and outpatient systems across all organizations or providers that care for the patient.



Interoperability Platform

Through its Service Oriented Architecture, intelligent workflow automation engine and various options for sharing data securely, Fusionfx leverages your technology investments to bridge information gaps along the continuum of care.

About Carefx Corporation

Carefx supports healthcare organizations in achieving their vision of advancing the quality and safety of patient care delivery through its Fusionfx solution suite. Fusionfx streamlines and simplifies clinical and business workflow and connects care providers to the information they need, where and when they need it. By managing care transitions and information gaps between diverse departments, systems and facilities, Fusionfx delivers crucial patient information with speed, efficiency and logic.

Carefx supports more than 700 hospitals, health systems and health information exchanges (HIEs) across North America and Europe.

Carefx can be reached at (480) 833-5010

or by email at info@carefx.com.

7500 N Dobson, Suite 200

Scottsdale, AZ 85256

Visit www.Carefx.com for more information.